



HOW TO

DRIFT STOPPER: SET-UP



STEP 1 / 9



THE DRIFT STOPPER CONSISTS OF:
4 Philips-head screws / 4 nuts / carrier-
bar with 1 center-joint and 2 side-parts
(incl. webbing-straps) / 2 fins
ATTENTION: for use on inflatable boards
ONLY! Do NOT use the Drift Stopper
on hard-shell boards as the webbing
tension might indent the rail.

STEP 2 / 9



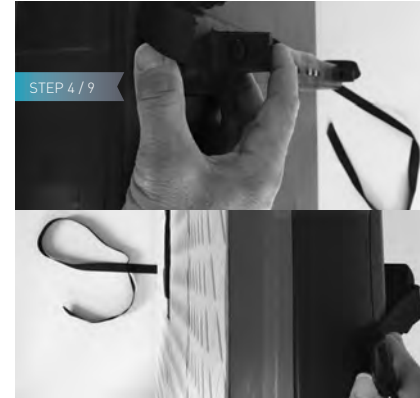
1. CARRIER-BAR ASSEMBLY:
(needs to be done only once):
Take both side-parts and press 2 nuts
each into the recess at the bottom side.

STEP 3 / 9



Now connect the center-joint to the side-
parts using the Philips-head screws.
Attention: the completed carrier-bar
should be approx. 4 to 6cm shorter than
your board width.

STEP 4 / 9



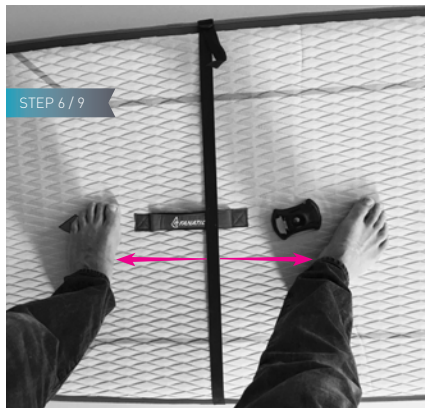
2. ATTACHMENT TO THE BOARD:
Put your board onto the rail to get the
long webbing end from the bottom-
through to the deck-side. Attention: do
not twist the webbing.

STEP 5 / 9



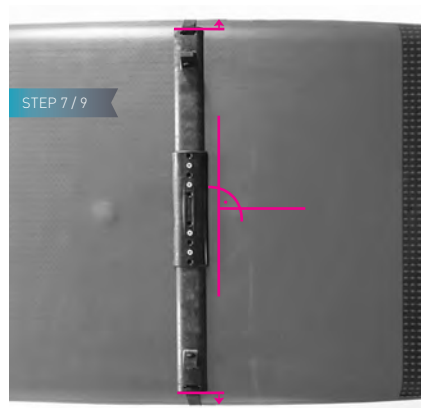
Thread the webbing through the buckle
but do not fully tension it yet.

STEP 6 / 9



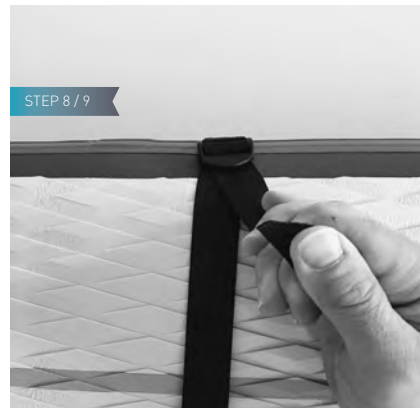
Correct positioning on the board:
depending on where you stand while surfing
the Drift Stopper should always be in the
middle in-between your feet.

STEP 7 / 9



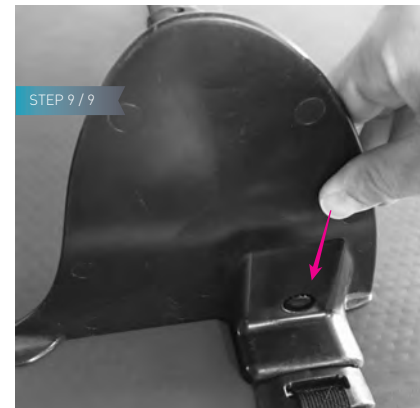
Now check the bottom-side to ensure
the Drift Stopper is centered on the
board.

STEP 8 / 9



Make sure to tension the webbing as hard
as you can to ensure a proper fitting to
the board.

STEP 9 / 9



Finally attach the side fins by just pushing
them down onto the carrier-bar.