



HOW TO

# iRIG: SETUP BASE PLATE



When used on a board with a threaded hole: Make sure to remove the nut-slider.



When used on a board with a slider-box: Do not remove the nut-slider but loosen it so that you get the base into the box.



Connect the base to the board by turning it clockwise. Make sure the base sits tight on the board.



CONNECT THE iRIG TO THE BASE: Open the lever as indicated by the arrow.



Now pull the lever as indicated by the arrow to fully open the base.



Get the iRIG and...



... put the pin into the hole of the base.



Now push the lever back inside as indicated by the arrow.



Finally secure the lever in place by pushing downwards. Now you're ready to go!

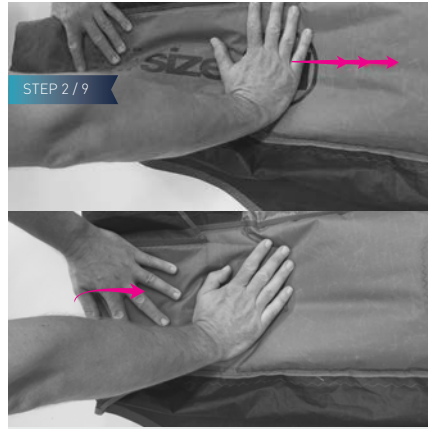


HOW TO

# iRIG: PACKING UP



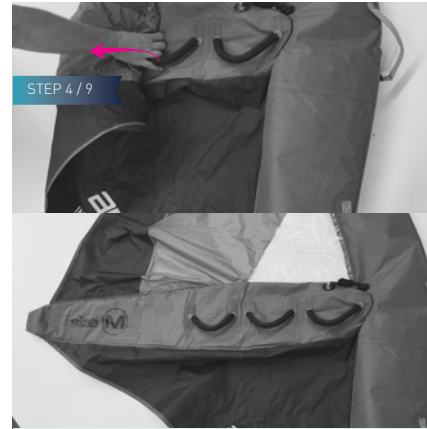
Open the deflation valve.



**DEFLATE THE BOOM-BLADDER:**  
Start from the back of the boom-bladder by pressing out the air with your flat hand and then folding over the boom-bladder.

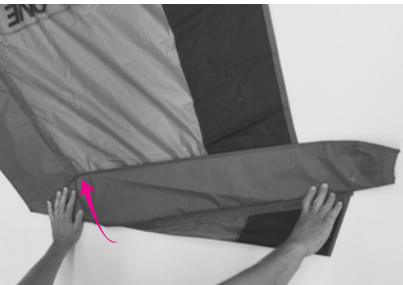


As soon as you have completely deflated the boom-bladder close the switch as indicated by the arrow.



Now roll out the boom-bladder again .

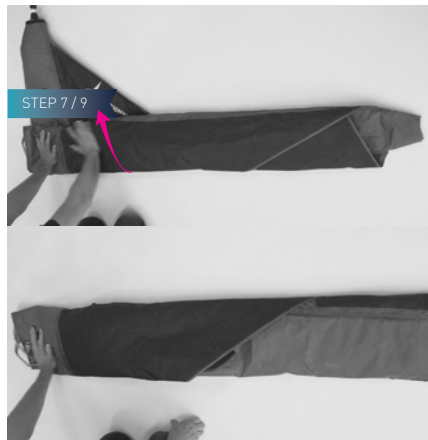
**PACKING UP:**  
Start folding here...  
...but only AFTER:  
1. deflating the boom-bladder  
2. closing the switch between boom- and mast bladder



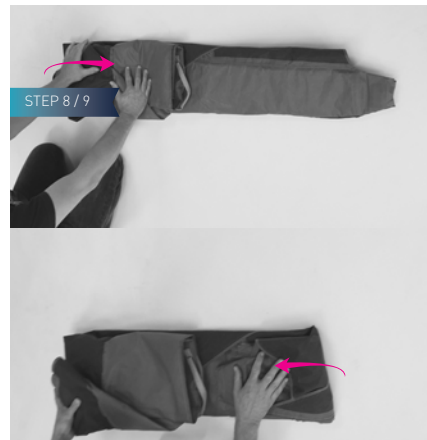
**DEFLATE THE MAST-BLADDER:**  
Start folding over the mast-bladder from the top at the fold-marking printed onto the bladder.



Continue to folding/rolling up the sail.



Finish folding/rolling up the sail.



Finally fold the package together transversally.



Finished and read to go home!